

Orthostand One

ergonomics for foot care

With Orthostand One pedorthists work healthy, productive and comfortable during the measurement and fitting process of footwear.



ORTH**STAND**

For pedorthists Orthostand One is a height-adjustable platform with a comfortable seat to measure and adjust footwear in a healthy and professional way.

Ergonomic working conditions for pedorthists

1. Working from a pit or on a platform

The most ergonomic way of working so far. Unfortunately, the costs are very high, it requires a lot of space and it is not representative.



2. Working from the ground

The problem with fitting orthopaedic shoes is that foot specialists often sit on their knees or bend over towards the client. The knees and back become worn out prematurely.



Orthostand One works

Orthostand One is equipped with a safe electrically height-adjustable platform with a particularly low step of 12.5 cm with solid rotating safety bars.

These swivelling safety bars can be secured in the following positions: step-up, standard support position or a more closed position for small people. There is also a transport position for the safety bars with which the Orthostand can be easily moved.

The Lift Module is powered by two powerful motors. The system has an enormous lifting capacity, but for safety it is limited to 140 kg because heavy people often experience problems with balance.

Orthostand One is standard equipped with a Notebook holder with the up/down button underneath for operating the Orthostand.



ORTHOSTAND
ergonomics for foot care

Mission Orthostand

"Optimal ergonomics when analysing feet and fitting of footwear."

Orthostand for pedorthists

Every day the need for a better ergonomic process for analysing and fitting footwear is growing for pedorthists who treat multiple clients daily.

Pedorthists often treat clients on their knees, or sitting bent over by their knees, with their arms extended to the client's feet. Their head, it simply cannot be otherwise, is often too close to the crotch of their clients.

Orthostand has developed a device that allows foot specialists to work more productively and comfortably during treating foot problems.

Orthostand improves the quality and ergonomics of the analysis of feet and fitting of footwear in medical applications.



Orthostand One for Clients

Clients experience more comfort on the Orthostand One with a comfortable PU seat and back during the often long measurement and fitting sessions. Clients are supported by solid safety bar supports in standing, semi-standing and seated positions.

The optimal ergonomic conditions for the Pedorthist also have a positive influence on the result.

Clients get a better solution because the service provider has better visibility and working position.

Especially for small people and children, the Platform module can be raised in no time by 8.5 cm in relation to the seat and safety bars.



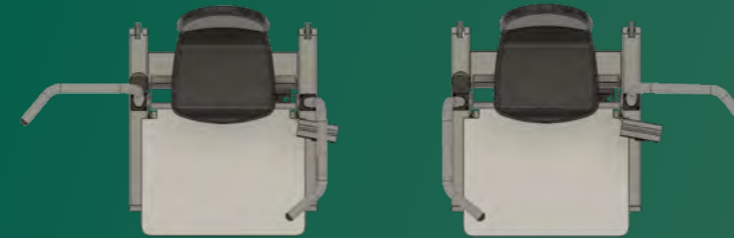
Orthostand One in care homes

At the rear, two wheels are integrated into the Lift module. The safety bars can be rotated backwards and secured in the Transport position.

Press one foot on one wheel and the Orthostand can be tilted backwards and moved around. A minimum width of 90 cm applies for the doors.



Safety bars in transport position



Step up most safely from the sides



Safety bars in standard position



Safety bars in Small-People position



Mobility made easy



Orthostand System Architecture

Orthostand is fully modularly designed and also prepared for technological developments of orthopaedic equipment in the future.

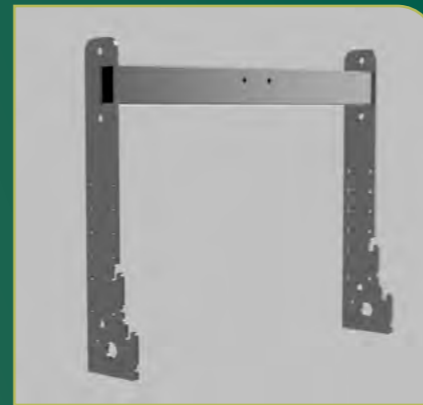
Solid Lift-Modules are coupled to the System Frame on both sides and form the base of the Orthostand.

System frame module

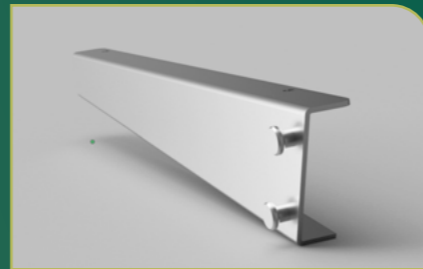
- 24 Free mounting holes with M8 screw thread are provided in the 6 mm thick steel sides of the System Frame module. Solid connections can be made there. For example with drawer guides for vacuum bed analyzers or scanners.
- The System Frame can therefore be adjusted up to 10 cm in height on the Lift-Modules to make room for equipment under the Platform module up to a height of 14 cm.
- For as yet unknown specific applications in the future, the System Frame itself can easily be exchanged for an alternative System frame. That makes the Orthostand One future-proof.



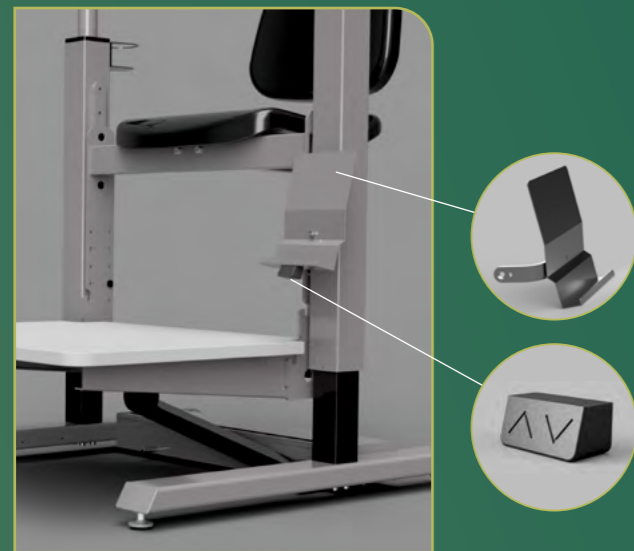
Lift-module



System frame module



Platform support



Notebook holder and up/down button

The cabling of third-party equipment is facilitated by the Cabling module mounted on the base. This consists of a Cable box with the attached Elbow height-variable cable gutter. Solid cabling is required for the mobility of the Orthostand One.

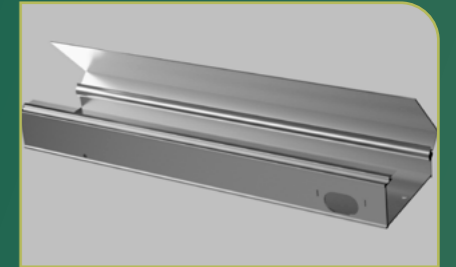
For mobility, large wheels are integrated into the rear sides of the Lift module. The base has 6 free threaded mounting holes for third-party equipment to be mounted under the Platform module.

The Platform module is hung in the System frame without tools. The Orthostand One is easily adjustable to the Small-People position. For this purpose, an additional Platform connector has been fitted in the System frame 8.5 cm above the standard position.

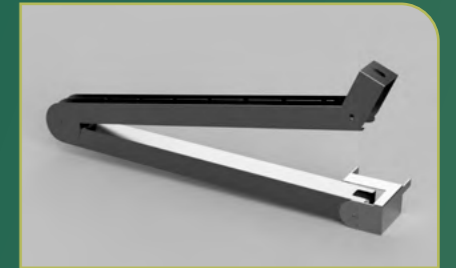
For specific requirements, the Platform can also be exchanged for a specific support for f.e. a special 3D scanner.

The slider module that is attached to the System frame is a kind of drawer for equipment on which clients are analysed while standing up. In use, the tray rests on the platform. To use the Platform, the slider is pushed back.

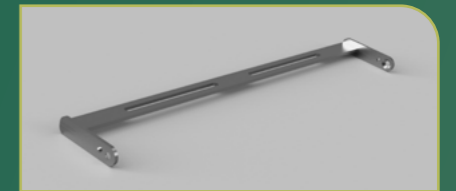
The Sensors module offers horizontal shifting capabilities for 3rd party line lasers.



Cabling module: a cable box with integrated:



the height adjustable cable gutter



Sensor module



Slider module set backwards



Slider module set backwards



Slider module set forward in action

Summary of benefits Orthostand One

1. Pedorthists have a better and longer working life.

- Better ergonomic working conditions for back and knees.
- 50+ people with reading glasses don't have to work with outstretched arms and blurry vision.
- Promotes better abdominal breathing.

2. A good working position of the Pedorthist creates better results for the client.

3. More comfort for clients during long analysis and fitting sessions.

- Alternate sitting, standing and semi-standing positions supported by solid safety bar supports.
- Client changes the workplace less.
- No embarrassing position of the head of the therapist at client's crotch.

4. Presentation as a professionally equipped practice.

5. Saves work space and improves efficiency.

- Multiple tasks on the same workstation.
- Client changes places less.

6. Prepared for technological developments in the future.

ORTHOSTAND
ergonomics for foot care



More information:

www.orthostand.com

Contact:

info@orthostand.com

Dimensions

General

- Length: 98cm, Width: 88 cm Including safety bars and overhanging back support
- Width when single safety bar open: 128 cm
- Floor contact: 77.5 cm wide x 80 cm deep

Seat

- Width: 44 cm, Depth: 43 cm, seat height standard: 41.5 cm
- With adjustable seat version (in development): between 39.5 and 50.5 cm
- Seat height at platform in the Small-People position: 33 cm.

Platform

- Width: 70 cm, Depth: 56 cm
- Minimum step-up height: 12.5 cm, max. height platform: 52.5 cm
- Maximum platform height at system setting +5cm: 57.5 cm and at position +10 cm: 62.5 cm

Height of safety bars relative to the platform

- Height of bars: 107 cm
- Height of bars at Small-People position: 98.5 cm

Weight

- Product: 59 kg
- Loadable weight: 140 kg

System positions

- If an accessory is placed under the platform, the entire platform and seat must be adjusted in height by 5 cm or 10 cm. This also increases the maximum height of the device by 5 or 10 cm.

Required minimum height of the workspace is 250 cm

- The height of the workspace minus 53 cm in standard position is the maximum length for a client. With a client height of 195 cm, the minimum height of the room is 248 cm.
- If the system position is set to +5 cm this becomes 253 cm and in system position +10 cm it becomes 258 cm. If the Platform is still in the Small People Mode, an additional 8.5 cm is added.

Options

- Sensor module with horizontal sliding possibility for line lasers from third parties
- Slider module for footbed or scanner on top of the platform
- Supports for the oven under platform (under development)