

# ORTHOSTAND

## Manual Orthostand One

### Main parts



1. Safety brackets
2. Platform Module
3. Seat
4. Sensor Module (optional)
5. Cable module

*Orthostand One is only suitable for the ergonomic measurement and fitting of footwear by professional service providers, taking into account the stated maximum weights. Any further use is considered inappropriate. The manufacturer is not liable for any resulting damage. This is solely at the risk of the user.*

Manufacturer does not take any responsibility for devices or mechanisms that are linked to the Orthostand One by third parties or service providers.

Register the device for the right to warranty using the QR code or NFC sticker with the manufacturer within three months. This also includes an upload of the purchase invoice requested to validate the warranty.

# Introduction

Orthostand One is an orthopedic lift that enables foot specialists to work more productively and comfortably while treating foot problems. The Orthostand One is equipped with a safe electrically height-adjustable platform with a step of 13.5 cm and equipped with rotating safety bars.

The Orthostand One is powered by two powerful motors. The system has a large lifting capacity, but is limited to 140 kg for safety because heavy people may experience balance problems.

<b>MANUAL</b>	<b>1</b>
Main parts	1
Introduction	2
Responsibility of persons involved with the machine	3
Responsibility of the owner	3
Responsibility of the service provider	3
Maintenance	3
Identification	3
Possible risks when working with Orthostand One	4
Risk: Electrocution due to incorrect use of power	4
Risk: Entrapment lower limbs of the service provider.	4
Risk: Falling when getting on or off the platform	5
Risk: Falling from the platform	5
Prohibited situations	6
Commissioning	6
Instructions	7
Operating brackets	7
Internal transport Orthostand One	8
Application of accessories	8
Safety	9
Specifications	10
General	10
Seat and safety	10
System workspace positions and height	10
Weight	10

# Responsibility of the persons involved with the machine

## Responsibility of the owner

Prohibit the use of the device to all persons :

- under the influence of narcotics, alcohol, etc..
- suffering from seizures, motor disturbances, vertigo, etc.

Register the device with the QR code or NFC sticker within three months with the manufacturer for the right to warranty. An upload of the purchase invoice is also requested to validate the warranty.

## Responsibility of the service provider

Service providers should ask clients whether they suffer from seizures, motor disturbances, vertigo, etc. Orhostand One is not suitable for people with these risk factors.

The service provider must read and understand this manual and the labels affixed to the device. The user must inform the owner of the absence or poor condition of the manual and labels and of all malfunctions and defects of the machine.

The user may only use the machine in the situations foreseen by the manufacturer as described by the manufacturer in the paragraph: "Commissioning".

## Maintenance

After 10 years, an inspection must be carried out for possible wear and tear of parts by the manufacturer or his authorized representative. The owner must take the initiative for this.

## Identification

The machine plate attached to the front left side of the chassis contains all the necessary information for identifying the machine. The user manual can be consulted using the QR code.

When requesting information, repairs or spare parts, please state the machine type and associated serial number.

# Possible risks when working with Orthostand One

In the evaluation of possible risks when using the Orthostand One , the following possible risks have been identified:

## Risk: Electrocution due to incorrect use of power

cable From a wall socket, a standard cable is connected to the 220V input of the Control box. This is a closed device that should not be opened. Check the output cord for damage before use and periodically thereafter.



If the cord is pulled hard, the socket will pull the cord out of the control box. To this end, the 220V control box is placed in the middle of the cable box with the back with the 220V input positioned towards the outlet of the cable box.

## Risk: Entrapment of the service provider's lower limbs.

Eand foot of one service provider, placed on the base of the orthopedic lift, off at the last part of the downward movement be pinched during the development of the Orthostand One following risk mitigation measures have been taken

1. Press-or-stop button. As soon as the service provider feels entrapment, it will release the button and the downward movement will immediately stop.
2. Hinged platform. This greatly reduces the downward force. In the event of an obstacle, the platform thus moves upwards. The downward force is then limited to a percentage of the residual weight of the seated patient on the platform.
3. Placing a sign stating that the client must sit during downward transport. As a result, the downward force in the event of entrapment is greatly reduced.
4. Placing a prohibition sign that clients are not allowed to operate the up/down button.
5. Options for remote control or memory functions resulting in autonomous movement of the Orthostand One are prohibited.
6. The height adjustment is limited to 40 cm so that the legs of the service provider are less likely to be placed under the platform. The service



provider should not place legs under the platform or feet on toes.

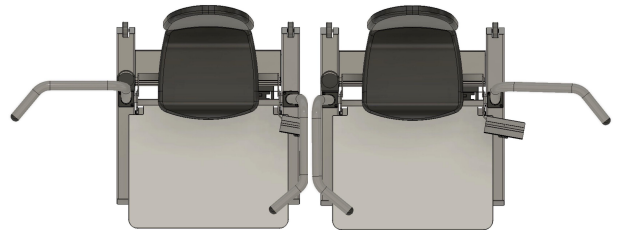
7. The platform supports are further from the toes to the System frame attached and the shape of the platform supports are rounded on the sides of the toes.
8. Do not load the platform more than 140 kg.
9. Limited up/down speed of 2.5cm/sec.

## Risk: Falling when getting on or off

the platform When less mobile clients get on or off the platform, there is a risk of falling.

during the development of the Orthostand One following risk mitigation measures have been taken for this purpose

- Less mobile clients should step sideways onto the platform of the orthopedic lift. For this, the platform extends over the toes of the Orthostand One to reduce the risk of tripping and lower the height of the step when stepping on.
- The solid support brackets are provided with fixation positions in lateral direction. To this end, the service provider must place the bracket in the correct position before getting on or off.
- The step height is limited to 13.5 cm. The service provider must place the platform in the lowest position before boarding.

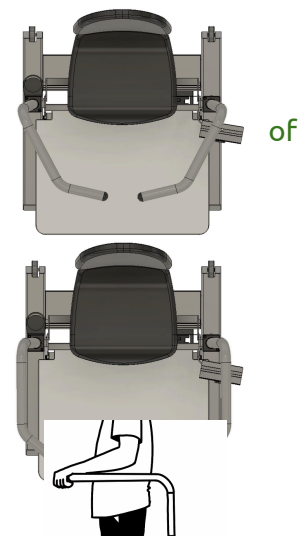


## Risk: Falling from the platform

For less mobile clients, a fall from a limited height can entail risks.

during the development of the Orthostand One following risk-mitigating measures have been taken for this purpose

- The solid support brackets have a circumferential shape.
- The support brackets are provided with fixation positions in two more or less closed positions depending on the posture the client.
- As , an optional extrahave developed that are positioned on the sides of the seat to prevent falling sideways in a sitting position. This facility is mainly intended for the treatment of clients with severe motor problems.
- The height adjustment is limited to 40 cm.
- Clients must hold the safety bars securely in the standing position.



## Prohibited situations

1. Do not load the platform with more than 140 kg.
2. Clients should NEVER operate this device themselves.
3. No limbs under the platform during downward movement Platform
4. Standing Client during platform downward movement.
5. The Orthostand One may only be used for **vertical patient** transport. Horizontal transport of clients on the Orthostand One is not permitted.
6. No wheelchair may be placed on the platform.

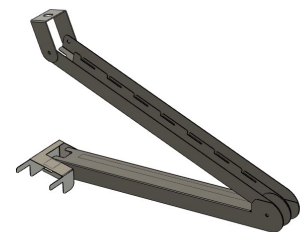


One

## Commissioning

- The device may only be placed in dry, dust-free places.
  - The height of the workspace minus 53 cm in standard position is the maximum height for a client. With a length of a client of 195 cm, the minimum height of the room is 250 cm.
  - If the system position is set to +5 cm this becomes 253 cm and in system position +10 cm it becomes 258 cm.
  - use the Orthostand One on an uneven surface.
  - Check the device for damage that could impede its operation.

- Numerous provisions have been made in the system frame for the connection of third-party devices. For the electrical connection, space has been reserved in the cable box for a socket. Cables can through the Elbow to the Platform module be routed.



- Connect the power cable to the mains after checking the cable.

- In the event of an electrical fault , press and hold the up and down buttons simultaneously. The device now slowly descends to the low position, stops automatically and rises again a short distance. Release both buttons. The electronics are now reset and the Orthostand One is ready for use again. If this procedure still does not work after repeating it, check whether the cable is properly connected and whether the power has been interrupted. In that situation it is our experience that the chance of recovery is greatest by replacing the control box. Unfortunately this is a fairly expensive part if out of warranty. The



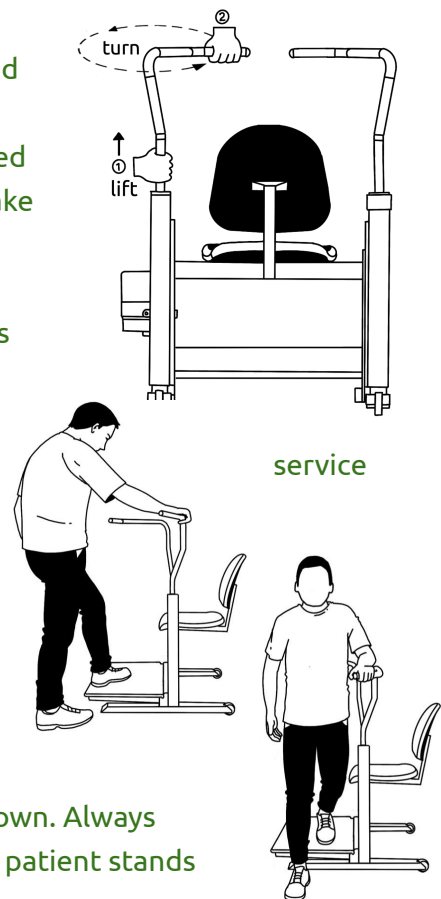
good news is that you can easily remove this part from the cable tray and swap the cables with the new control box. All without tools.

## Directions

Invite less mobile residents to pull up on the handles for activities in a standing position.

### Operating the brackets

- By taking hold of the bracket under the first bend and pulling it upwards, the bracket will release from the lock. The bracket can now rotate in and then be locked in three positions: Step Up, Tall People or Closed. Make sure the bracket on the other side is locked in the closed position.
- When boarding, the bracket is open at right angles as support when boarding on the platform. After getting on, the client must first sit down to prevent possible entrapment of limbs of the provider.
- After boarding, the service provider can close the bar in two positions:  
The Closed position or the position for Tall people. Choose the most possible closed position.
- Make sure that the bracket is firmly secured in one of the three positions by looking for/feel the closing point while turning. Then push the bracket down. Always recheck that the handle is locked in place before the patient stands up.



## Internal transport Orthostand One

At the rear, two wheels are integrated in the Lift module. The safety bars can be swung backwards and locked in the transport position.



Press one foot on one wheel and the Orthostand One can be tilted back and moved.

A minimum width of 90 cm applies to the doors. The Notebook holder must be moved inwards.

## Application of attachment means

1. Sensor module with horizontal sliding possibility for third-party line
2. lasers Foot
3. switch Cup holder
4. Slider for footbed or scanner on top of the Platform
5. Supports for the oven under the Platform max. width 40 cm
6. Wall bracket to detach Orthostand One from a wall with Quick Release



# Safety

1. Let children never be left unattended with this system. Children cannot properly assess the risks associated with the power of the system.
2. Before lifting the platform, the service provider must close the brackets.
3. When adjusting the height of the platform, the service provider must ensure that no one can be injured in order to avoid the risk of crushing and trapping. Entrapment of the lower limbs of the service provider poses a risk. The service provider should not place legs under the platform or feet on the construction of the Orthostand One .
4. During the downward movement of the Orthostand One , the service provider must ensure that, with the exception of the client sitting on it, other people or animals keep a minimum distance of 25 cm from the Orthostand One and that the client is seated.
5. Do not load the platform more than 140 kg.
6. No wheelchairs may be placed on the Orthostand One.
7. Options for remote control or memory functions resulting in autonomous movement of the Orthostand One are prohibited.
8. Under no circumstances should the control knob be operated by the client.
9. Less mobile clients should step onto the platform from the side and NOT from the front. To do this, open one of the brackets sideways.
10. Never open any components of the system. Unauthorized opening and improper repairs can create risks for the user and will void the warranty. Electrical components may only be opened and repaired by the manufacturer's personnel.
11. Do not run with the wheels over the power cable
12. In the event of unauthorized changes to the system, the manufacturer's liability for resulting damage is excluded.
13. The product may no longer be used in the event of malfunctions such as smoke or odor development as well as strange noises or visible external damage. Remove the plug from the socket.
14. Regularly check whether the 220 Volt cable from the wall socket to the Control Unit in the cable box is not damaged.

# Specifications

## General

- Length: 98 cm, Width: 80 cm Including overhanging backrest
- Platform Width: 77 cm, Depth: 56 cm

## Seat and safety bars

- Width: 44 cm, Depth: 43 cm
- Adjustable seat height: 395 mm - 530 mm
- Height of safety bars to the platform: 110 cm

## System positions and workspace height

- With the three System positions of the System frame, the height range of the Platform can be adjusted later:
  - System position 'Low': min 13.5 cm - max 53.5 cm,
  - System position 'Medium' ': min 18.5 cm - max 58.5 cm
  - System position 'High': min 23.5 cm - max 63.5 cm.
- If an accessory is placed under the platform, the platform and seat can be adjusted 5 cm or 10 cm in height on the Lift module. This also increases the maximum height of the device by 5 or 10 cm.
- The height of the workspace minus 55 cm in System position 'low' is the maximum height for a client. With a length of a client of 195 cm, the minimum height of the room is 250 cm.
- If the System mode is set to Medium this will be 255 cm and in System mode High this will be 260 cm.

## weight

- : 62 kg
- Max . load: 140 kg

## Warranty

- 5 year limited warranty on parts and 2 year warranty on the Platform, actuators, control box and cables.
- See the manufacturer's terms of delivery on the website.

# CE declaration of conformity Orthostand One

Name and address of the manufacturer: Podox BV trading under the trade name Orthostand  
Mevr. van Vollenhovenpark 11  
3971 CW Driebergen, the Netherlands

Generic name	Orthopedic lift
Function	the workplace
Trade and model	Orthostand One with the options:; Sensor module, Foot switch, Cup holder, Wall bracket, PTS foot scan plate
Product description:	An electrically height-adjustable platform
specialists use to treat clients	with safety brackets and a height-adjustable seat that foot with foot problems.
Serial number	series A1 - A10.000

The Orthostand One complies with all applicable provisions of:

DIRECTIVE 2006/42/EU OF THE EUROPEAN PARLIAMENT AND OF THE COUNCIL of 17 May 2006 on machines.

This declaration only relates to the machine in the condition in which it was placed on the market, excluding components subsequently added and/or operations carried out by the end user.

For an overview of the applied harmonized standards see next page.

Driebergen, 01 December 2022

Jan Beltman  
Director Podox BV  
trading under the trade name Orthostand

The following relevant harmonized standards and/or technical specifications that have been taken as the basis for declaring conformity of the designated product with the directive are:

<b>Legislative</b>	<b>reference Reference standard</b>	<b>Title of the standard</b>
2006/42/EC	EN ISO 12100 2010	Safety of machinery - General design principles - Risk assessment and risk reduction
2006/42/EC	EN 614 2006	Safety of machinery - Ergonomic design principles
2006/42/EC	EN 894 2010	Safety of machinery - Ergonomic requirements for design of information and control
2006/42/EC	EN 1005 2008	Safety of machinery - Human physical stress
2006/42/EC	EN 1037 2008	Safety of machinery - Prevention of unintentional starting
2006/42/EC	EN ISO 13850 2008	Safety of machinery - Emergency stop
2006/42/EC	EN ISO 13854 2019	Machinery safety - Minimum distance to avoid crushing of human body parts
2006/42/EC	EN ISO 13857 2019	Safety of machinery - Safety distances to prevent danger zones from being reached by upper and lower limbs
2006/42/EC	EN ISO 14118 2018	Safety of machinery - Prevention of unintentional starting
2006/42 /EC	EN ISO 14122 2016	Safety of machinery - Fixed means of access to machinery and industrial installations